



2019 Heavy Equipment Snowplows & Spreaders





BOSS Heavy Equipment products are engineered with all the same reliability and innovation as our truck equipment and built to put the full force of your skid steer, tractor, backhoe or loader into pushing through winter’s heaviest snowfalls. BOSS products for Heavy Equipment attach easily and offer a large carrying capacity. And because they’re from BOSS, you can be sure these Heavy Equipment products are durable and packed with features to make your job easier and more efficient. Because BOSS is always there to BACK YOU UP.

BOSS Products, a division of The Toro Company, reserves the right under its product improvement policy to change construction or design details and furnish equipment when so altered without reference to illustrations or specifications used herein.

TABLE OF CONTENTS

4 Skid Steer Box Plows

6 Skid Steer Plows

8 QuickCube® Skid Steer Spreader

10 Backhoe Box Plows

12 Loader Box Plows

14 Tractor Plows and Spreader / Accessories

16 Specifications

*All images shown may include standard/optional equipment. Please consult your local BOSS Dealer for more information.

SKID STEER BOX PLOWS

UNLOCK YOUR SKID STEER'S FULL POWER

The BOSS SK and SK-R box plow families are designed to put the full force and maneuverability of your skid steer into getting the pavement BACK TO BLACK. The all-new SK-R 6 rubber edge, skid steer box plow is the latest addition to this plow family, and because they are from BOSS, you know they are tough and durable enough to BACK YOU UP.



STANDARD FEATURES

- **High-Efficiency Moldboard** features a tight curl that "rolls" the snow and reduces resistance.
- **Bolt-On Wing Design** allows quick and easy replacement of wing if damage occurs.
- **SmartShield®** features our exclusive epoxy-based primer, which provides one of the toughest and most corrosion-resistant paint finishes in the industry.

SK

- **1/2" x 6" Durable Steel Cutting Edge** delivers outstanding resistance to impact and abrasion.
- **Floating Attachment System** provides built-in float and pivot features that optimize plowing performance on uneven, rough surfaces.

- **Adjustable Heavy-Duty Trip Springs** are tough, tested and proven in some of the harshest environments.
- **Heavy-Duty Wing Shoes** provide superior wear resistance for long-term durability.

SK-R

- **1 1/2" x 8" Reversible Rubber Cutting Edge** protects surfaces and offers quieter plowing operations.
- **Fixed Attachment System** allows easy attachment to the skid steer attachment plate.
- **Articulating, Heavy-Duty Wing Shoes** maintain pavement contact on uneven surfaces and provide superior wear resistance.

Ask Your BOSS Dealer About Optional Backdrag Edge for SK or SK-R Models.

MODELS

	6'	8'	10'	12'
SK		✓	✓	✓
SK-R	✓	✓	✓	



Features a universal coupler that attaches to most skid steer attachment systems.



SKID STEER PLOWS

ROLL WITH WINTER'S PUNCHES

BOSS Trip-Edge straight-blade snowplows for skid steers are engineered to power through the heaviest snow and any obstacles that come with it. The extra-rigid moldboard and trip-edge technology ensure that only the cutting edge trips when you hit an obstacle, so you won't lose the load you're pushing. Trip-Edge skid steer snowplows feature four adjustable trip return springs, so you can customize the trip spring tension for the job at hand. Available in steel and stainless steel, BOSS Trip-Edge skid steer snowplows are built to BACK YOU UP.

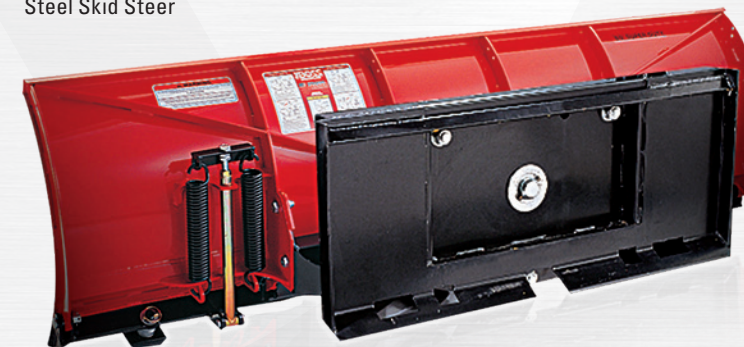
STANDARD FEATURES

- **Trip-Edge Design** helps to prevent plow damage when an obstacle is encountered.
- **Adjustable Trip Springs** allow you to customize the trip spring tension.
- **Cast-Iron Plow Shoes** extend the life of the cutting edge.
- **Reinforced Moldboard** increases blade rigidity for increased durability.
- **Skid Steer Attachment System** provides built-in pivot features that optimize plowing performance on uneven, rough surfaces.
- **Angle Left and Right** using auxiliary hydraulics and in-cab controls to maneuver.

MODELS

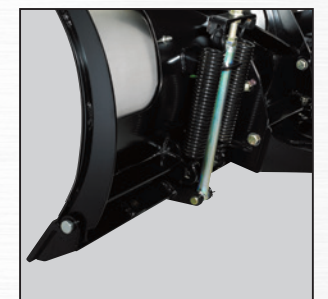
	7'6"	8'	9'
Steel	✓	✓	✓
Stainless		✓	✓

8' Super-Duty Trip-Edge Steel Skid Steer



TRIP-EDGE DESIGN

The base angle, or cutting edge, trips back to protect the plow and truck from damage when obstacles are encountered.



ADJUSTABLE TRIP SPRINGS

Adjustable BOSS trip springs let the operator adjust the trip-edge tension according to the job at hand.

QUICKCUBE® SKID STEER SPREADER

A NEW WAY TO WORK

The BOSS QuickCube® is the super-efficient, skid-steer-based ice control system, invented for the snow and ice contractor, by a snow and ice contractor. It's an all-in-one salt spreader and storage unit that's kept at the job site. It increases profitability, decreases operational costs and improves response time as well as provides an off-site salt storage system that eliminates unsightly and costly shelters, tarps and exposed salt piles. It's quickly becoming a part of many large fleets, and it's exclusively a BOSS innovation that's built to BACK YOU UP.



QUICKCUBE® BENEFITS

- **Improve Response Time** by staging a skid steer and QuickCube® system at the job site for lightning fast response time.
- **Reduce Fuel Costs and Truck Wear and Tear** by diminishing the transportation of salt and deicing materials.
- **A Weather-Resistant, Stackable Design** has each cube holding about 1,000 pounds of salt, eliminating the need for remote piles, tarps and temporary shelters.
- **Expand Your Labor Pool** by hiring skid steer operators rather than truck drivers. Always check local laws regarding licensing.
- **Load Simply and Easily** using a skid steer bucket to fill two QuickCube® units simultaneously.
- **Transport Loaded Cubes** ahead of time while the weather is good to reduce the risk of truck travel on snowy, icy days.





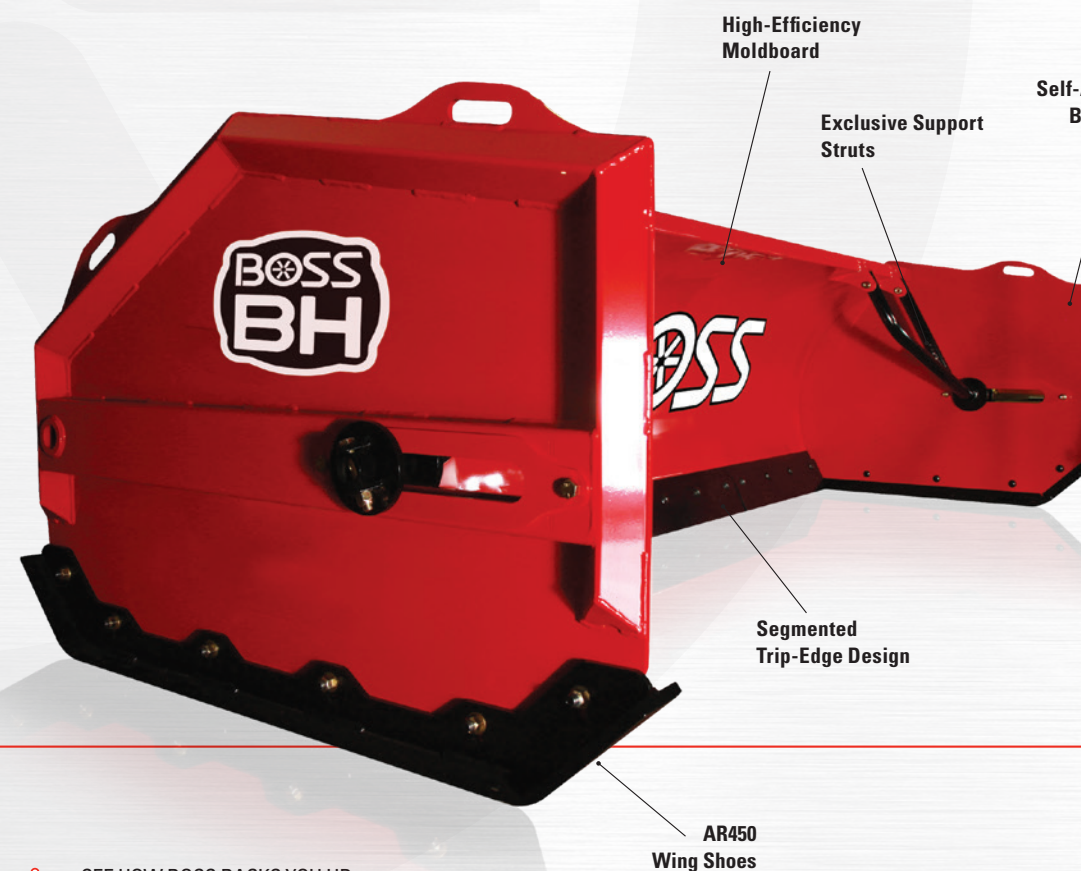
BACKHOE BOX PLOWS

OPTIMIZED POWER IN EVERY PUSH

Be at your best when Mother Nature is at her worst with powerful BH box plows from BOSS. BH box plows attach quickly and easily to backhoes and work efficiently to help you RESTORE ORDER to the parking lots of your community. They are designed with strength and durability to help get the job done faster, easier and more efficiently. That's how BOSS BACKS YOU UP.

BH 12' STANDARD FEATURES

- **High-Efficiency Moldboard** features a 70-degree attack angle that "rolls" the snow and reduces resistance.
- **Exclusive Self-Adjusting Box Wings** automatically adjust to the contour of the pavement.
- **Floating Bucket Attachment System** attaches quickly and easily with a bucket receiver that floats on replaceable wear shims to prevent binding.
- **Segmented Trip-Edge Design** is engineered so each cutting edge segment trips individually.
- **Adjustable Heavy-Duty Trip Springs** are tough, tested and proven in some of the harshest environments.
- **Robust Support Struts** pivot for structural strength, stability and long-term durability.
- **AR450 Wing Shoes** provide superior wear resistance for long-term durability.



High-Efficiency
Moldboard

Exclusive Support
Struts

Self-Adjusting
Box Wings

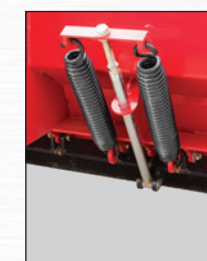
Segmented
Trip-Edge Design

AR450
Wing Shoes

Floating Bucket
Attachment System



Adjustable Heavy-Duty
Trip Springs



ROLL OUT THE HEAVY HITTERS

Stand up to Old Man Winter no matter his mood with the powerful LDR box plow from BOSS. The LDR is super simple to use. It attaches to any of your loaders in a matter of seconds to help you quickly and efficiently RESTORE ORDER to any lot you need to clear. LDR box plows are equipped with innovative protection technology that keeps you operational and gets the job done faster, easier and more efficiently. That's how BOSS BACKS YOU UP.



STANDARD FEATURES

- **High-Efficiency Moldboard** features a 70-degree attack angle that "rolls" the snow and reduces resistance.
- **Exclusive Self-Adjusting Box Wings** automatically adjust to the contour of the pavement.
- **Floating Bucket Attachment System** attaches quickly and easily with a bucket receiver that floats on replaceable wear shims to prevent binding. The fork receiver also adjusts to different bucket edge thicknesses.
- **Segmented Trip-Edge Design** is engineered so each cutting edge segment trips individually.
- **Adjustable Heavy-Duty Trip Springs** are tough, tested and proven in some of the harshest environments.
- **Robust Support Struts** pivot for structural strength, stability and long-term durability.
- **AR450 Wing Shoes** provide superior wear resistance for long-term durability.

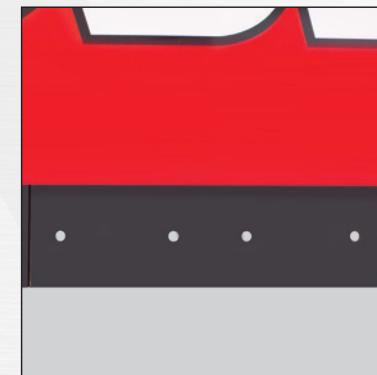
MODELS

	14'	16'
LDR	✓	✓

ACCESSORIES/OPTIONS

Enhance your LDR Box Plow performance with genuine BOSS parts and accessories.

- **Hitch Wear Shim**
- **Universal Box Plow Coupler Kit**



Segmented Trip-Edge is engineered so each cutting edge segment trips individually. (Replacement Cutting Edge sold separately. The tripping base angle on the SK and LDR series will act as the wear edge until worn.)



Universal Fork Mount is designed to attach quickly and easily with a simple slide.



Adjustable, Heavy-Duty Trip Springs are torture-tested and allow the operator to adjust trip-edge tension according to the job at hand.

TRACTOR PLOWS AND SPREADER

YOUR TRACTOR JUST GOT TOUGHER

Plow and spreader options are now available to turn your tractor into a powerful ally in the war on snow. BOSS tractor undercarriages attach a range of BOSS plows to your John Deere® or Kubota® tractor quickly and easily. Choose from V-plows, straight-blade plows or expanding plows to RESTORE ORDER using the full power of your tractor.

HTX

APPLICATIONS

- **John Deere 3 and 4 Series Tractor Models** are compatible with both RT3 straight-blades and V-plows as well as HTX RT3 plow models.
- **John Deere 5 Series and Kubota Grand L40 Tractor Models** are compatible with RT3 straight-blades and V-plows. (Excludes HTX RT3 plow models and heavy-duty plows.)

STANDARD FEATURES

EXACT PATH® 6.0 DROP SPREADER

- **8-Position Adjustable Feed Gate** allows you to adjust the material discharge amount without tools for extra flow control.
- **Stainless Steel Hopper and Frame Construction** are built to outlast the elements.
- **Solid Poly Hopper Cover With Flexible Draw Latch** protects against weather and is made to last.
- **Easily Mount** with a Category 1, 3-point hitch attachment.

STANDARD FEATURES

TRACTOR PLOWS

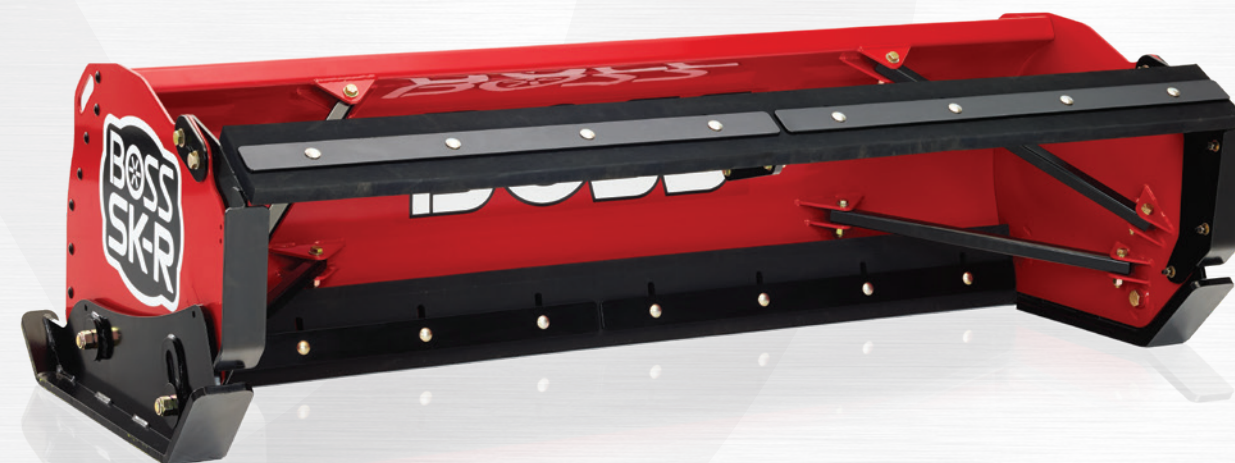
- **Complete Plow Package** includes blade crate, plow box, tractor undercarriage and control kit.

EXACT PATH® 6.0
Drop Spreader



BOSS SNOWPLOW AUTHORIZED ACCESSORIES

HEAVY EQUIPMENT ACCESSORIES



BACKDRAG EDGE

Improve scraping performance when backdragging. Available accessory on all skid steer box plows.

UNIVERSAL BOX PLOW COUPLER KIT

Quickly connect and disconnect when attaching a BOSS BH box plow to the arms of a loader with the universal box plow coupler kit. (Not recommended for LDR.)

BOX PLOWS

SK BOX PLOWS

VEHICLE APPLICATION: SKID STEERS



Specifications	6' SK-R	8' SK / SK-R	10' SK / SK-R	12' SK
Width	79" (200 cm)	100" (254 cm) / 102.8" (261 cm)	124" (315 cm) / 126.8" (322 cm)	148" (376 cm)
Weight	860 lb (390 kg)	900 lb (409 kg) / 970 lb (440 kg)	1,000 lb (454 kg) / 1,078 lb (489 kg)	1,245 lb (564.72 kg)
Moldboard Height	30" (76 cm)	30" (76 cm)	30" (76 cm)	30" (76 cm)
Base Angle	N/A	½" x 3½" x 3½" (1.3 cm x 9 cm x 9 cm)	½" x 3½" x 3½" (1.3 cm x 9 cm x 9 cm)	½" x 3½" x 3½" (1.3 cm x 9 cm x 9 cm)
Moldboard Thickness	7-ga steel	11-ga steel / 7-ga steel	11-ga steel / 7-ga steel	11-ga steel
Cutting Edge	1½" x 8" (3.8 cm x 20.3 cm) reversible rubber	½" x 6" (1.3 cm x 15 cm) steel / 1½" x 8" (3.8 cm x 20.3 cm) reversible rubber	½" x 6" (1.3 cm x 15 cm) steel / 1½" x 8" (3.8 cm x 20.3 cm) reversible rubber	½" x 6" (1.3 cm x 15 cm) steel
Trip Design	Rubber edge	Trip-edge / rubber edge	Trip-edge / rubber edge	Trip-edge
Trip Springs	N/A	4 / N/A	4 / N/A	8
Wing Dimensions	30¾" x 38" (77 cm x 97 cm)	30¾" x 38" (78 cm x 97 cm) / 30¾" x 38" (77 cm x 97 cm)	30¾" x 38" (78 cm x 97 cm) / 30¾" x 38" (77 cm x 97 cm)	30¾" x 38" (78 cm x 97 cm)
Wing Thickness	⅝" (0.8 cm)	¼" (0.64 cm) / ⅝" (0.8 cm)	¼" (0.64 cm) / ⅝" (0.8 cm)	¼" (0.64 cm)
Vertical Supports	4	6 / 4	8 / 4	10
Horizontal Supports	2 horizontal pans	1 upper pan, 3 lower pans / 2 horizontal pans	3 upper pans, 5 lower pans / 2 horizontal pans	3 upper pans, 5 lower pans
Attachment Style	Universal coupler / SAE J2513 solid mount	Universal coupler / SAE J2513 solid mount	Universal coupler / SAE J2513 solid mount	Universal coupler
Vertical Hitch Float	N/A	Automatic / N/A	Automatic / N/A	Automatic
Wing Shoes (Material)	¾" AR400	½" AR450 / ¾" AR400	½" AR450 / ¾" AR400	½" AR450

Consult product selector tool at bossplow.com for recommended applications.

TRIP-EDGE PLOWS

TRIP-EDGE SUPER-DUTY STRAIGHT-BLADE

TRACTOR APPLICATION: JOHN DEERE® 4 AND 5 SERIES, KUBOTA® GRAND L40 TRACTOR MODELS AND SKID STEER



Specifications	7'6" Trip-Edge Steel	8' Trip-Edge Steel / Stainless	9' Trip-Edge Steel / Stainless
Blade Width (Straight)	90" (229 cm)	96" (244 cm)	108" (274 cm)
Plowing Width @ 30° Angle	78" (198 cm)	83" (211 cm)	93½" (238 cm)
Blade Height	31" (79 cm)	31" (79 cm)	31" (79 cm)
Blade Thickness	11-ga steel	11-ga steel / 14-ga 304 stainless	11-ga steel / 14-ga 304 stainless
Base Angle	½" x 3½" (1.3 cm x 9 cm)	½" x 3½" (1.3 cm x 9 cm)	½" x 3½" (1.3 cm x 9 cm)
Cutting Edge	½" x 6" (1.3 cm x 15 cm)	½" x 6" (1.3 cm x 15 cm)	½" x 6" (1.3 cm x 15 cm)
Reinforcement Ribs	6 vertical, 2 diagonal	6 vertical, 2 diagonal	8 vertical, 2 diagonal
Plow Shoes	Cast iron	Cast iron	Cast iron
Trip Springs	4	4	4
Trip Pivot Pin Diameter	1" (3 cm)	1" (3 cm)	1" (3 cm)
Trip Spring Type	¾" (0.95 cm) hooked extension spring	¾" (0.95 cm) hooked extension spring	¾" (0.95 cm) hooked extension spring
Trip-Edge Adjustable	Standard	Standard	Standard
Angle Cylinders	1½" x 10" (4 cm x 25 cm)	1½" x 10" (4 cm x 25 cm)	1½" x 10" (4 cm x 25 cm)
Lift Cylinder	2" x 1½" x 10" (5 cm x 3 cm x 25 cm)	2" x 1½" x 10" (5 cm x 3 cm x 25 cm)	2" x 1½" x 10" (5 cm x 3 cm x 25 cm)
Attachment System	Universal coupler / SAE J2513 solid mount	Universal coupler / SAE J2513 solid mount	Universal coupler / SAE J2513 solid mount
Plow Weight*	796 lb^A (361 kg)	809 lb^A (367 kg) / 836 lb^A (379 kg)	857 lb^A (389 kg) / 888 lb^A (403 kg)

*Plow weight does not include vehicle mount weight. ^Vehicle mount weight range: 75-105 lb (34-48 kg).

All images shown may include standard/optional equipment. Please consult your local BOSS Dealer for more information.

TWO-YEAR LIMITED WARRANTY

All BOSS snowplows and equipment are guaranteed to be free from defects in material and workmanship for two full years from the date of purchase. Stop by any authorized BOSS Dealer to receive complete details on our two-year parts and labor warranty. Please visit bossplow.com for more details.

LEGAL STATEMENT

Vehicles intended to be equipped with a spreader and/or snowplow must comply with the vehicle manufacturers' specifications for equipment application. BOSS Products reserves the right under its product improvement policy to change construction or design details and furnish equipment when so altered without reference to illustrations or specifications used herein. BOSS Products may be protected by one or more patents; please see bossplow.com for more details.

To comply with federal regulations and to ensure a safe vehicle, do not exceed the front gross axle weight rating (FGAWR), rear gross axle weight rating (RGAWR), gross vehicle weight rating (GVWR) or maximum vehicle payload ratings at any time. Combinations of equipment such as snowplows and spreaders, density of material being spread and the number of vehicle occupants should be taken into consideration. Ensuring these limitations are not exceeded may require weighing the vehicle and adding ballast as necessary. For receiver hitch-mounted products, do not exceed hitch rating at any time. Completed vehicle must not exceed front GAWR or GVWR.

ICE CONTROL EQUIPMENT

QUICKCUBE®

VEHICLE APPLICATION: SKID STEERS



Specifications	QuickCube®	Specifications	QuickCube®
Cube Length	38" (97 cm)	Max Feed Rate	2 cu ft (0.06 cu m) per minute
Cube Height	38" (97 cm)	Hydraulic Motor	3,010 in-lb torque max, 600 rpm max
Cube Width	46" (117 cm)	Flow Control Block	Standard - adjustable
Cube Weight (Empty)	100 lb (45 kg)	Control	Skid steer auxiliary controls
Cube Construction	Gray HDPE (high-density polyethylene)	Hydraulic Coupler Type/Size	Standard -10 ORB flush face quick couplings
Cover Construction	Gray HDPE (high-density polyethylene)	Hydraulic Hose Type/Size	-08 and -10 JIC & ORB, Parker 387, ISO 18752-DC
Spreader Weight	420 lb (191 kg)	Adjustable Deflector	Standard
Spreader Construction	High-strength steel	Cube Capacity	½ cu yd (0.38 cu m)
Fork Construction	AR400 and high-strength steel	Spinner	14.25" (36.2 cm) diameter stainless steel
Spreading Width	2' - 40' (0.6 m - 12.2 m)		

Consult product selector tool at bossplow.com for recommended applications.

EXACT PATH®

VEHICLE APPLICATION: UTV, TRACTOR AND SNOWRATOR®



Specifications	EXACT PATH® 6.0	Specifications	EXACT PATH® 6.0
Capacity Volume	6.0 cu ft (0.17 cu m)	Feed Drum	Stainless steel
Empty Weight	175 lb (79.4 kg)	Feed Baffle	Polyurethane
Full Weight	715 lb (@ 90 lb/cu ft)	Hopper Construction	Stainless steel
Overall Depth	16½" (42 cm)	Motor	¼ hp / 12-volt DC
Overall Height	29¾" (76 cm) (with cover installed)	Attachments	2" receiver, 3-point, UTV Bed Mount
Overall Width	47⅞" (120 cm)	Top Screen	Standard
Hopper Length	16" (41 cm)	Cover Construction	Standard poly
Hopper Width	39⅞" (100 cm)	Drum Guard/Bed Shield	Standard; stainless steel
Spreading Width	40" (102 cm)	Gearbox Ratio	137.25:1 right angle worm
Controller	Variable speed	Minimum Bed Capacity	1,000 lb (453.6 kg)
Feed Gate	8-position adjustable		

BOX PLOWS

BH AND LDR BOX PLOWS

VEHICLE APPLICATION: BACKHOE AND LOADERS



Specifications	12' BH	14' LDR	16' LDR
Width	150" (381 cm)	175.5" (445.8 cm)	199.5" (506.7 cm)
Weight	2,000 lb (907 kg)	3,190 lb (1,447 kg)	3,320 lb (1,506 kg)
Moldboard Height	38" (97 cm)	49" (124.5 cm)	49" (124.5 cm)
Base Angle	½" x 6" x 35⅝" (1.3 cm x 15 cm x 91 cm)	½" x 5½" x 27⅞" (1.3 cm x 14 cm x 70 cm)	½" x 5½" x 30⅝" (1.3 cm x 14 cm x 79 cm)
Moldboard Thickness	11-ga steel	7-ga steel	7-ga steel
Segmented Cutting Edges	½" x 8" x 35⅝" (1.3 cm x 20 cm x 91 cm) (AR400)	¾" x 8" x 27⅞" (1.9 cm x 20 cm x 70 cm) (AR400)	¾" x 8" x 30⅝" (1.9 cm x 20 cm x 79 cm) (AR400)
Trip Design	Segmented trip-edge	Segmented trip-edge	Segmented trip-edge
Wing Dimensions	40" x 56" (102 cm x 142 cm)	48" x 58½" (122 cm x 149 cm)	48" x 58½" (122 cm x 149 cm)
Wing Thickness	⅜" (0.95 cm)	⅜" (0.95 cm)	⅜" (0.95 cm)
Wing Leveling	Automatic	Automatic	Automatic
Vertical Supports	12	15	15
Horizontal Supports	5 upper pans / 7 lower pans	3 upper pans / 3 lower pans	3 upper pans / 3 lower pans
Attachment Strategy	Universal bucket receiver, 3" opening binder chain (customer-supplied)	Universal (ADJ) bucket receiver, 3" opening binder chain (customer-supplied)	Universal (ADJ) bucket receiver, 3" opening binder chain (customer-supplied)
Vertical Hitch Float	Automatic – 8" (20 cm) vertical	Automatic – 9⅞" (25 cm) vertical	Automatic – 9⅞" (25 cm) vertical
Wing Shoes (Material)	AR450	AR450	AR450

Consult product selector tool at bossplow.com for recommended applications.

TRACTOR PLOWS

DXT

TRACTOR APPLICATION: JOHN DEERE® 4 AND 5 SERIES AND KUBOTA® GRAND L40 TRACTOR MODELS



Specifications	8'2" DXT Steel / Poly / Stainless	9'2" DXT Steel / Poly / Stainless
Blade Width (Straight) Curb Guard Width*	98" (249 cm) 101" (256.5 cm)	110" (279 cm) 113" (287 cm)
Blade Width (V Position) Curb Guard Width*	88" (224 cm) 88" (224 cm)	99" (251 cm) 94.4" (239.8 cm)
Blade Width (Scoop) Curb Guard Width*	81" (206 cm) 92.9" (235.9 cm)	92" (234 cm) 103.3" (262.4 cm)
Plowing Width @ 30° Angle	85" (216 cm)	95" (241 cm)
Blade Height	30" (76 cm) at center; 37½" (95 cm) at ends	30" (76 cm) at center; 37½" (95 cm) at ends
Blade Thickness	11-ga steel / ¾" (0.95 cm) poly / 14-ga stainless steel	11-ga steel / ¾" (0.95 cm) poly / 14-ga stainless steel
Base Angle	½" x 6" (1.3 cm x 15 cm)***	½" x 6" (1.3 cm x 15 cm)***
Reinforcement Ribs	6 vertical, 2 diagonal	8 vertical, 2 diagonal
Plow Shoes	Optional	Optional
Trip Springs (Moldboard)	4 extension springs	4 extension springs
Trip Springs (Base Angle)	6 total	6 total
SmartLock® Cylinders	1½" x 10" (4 cm x 25 cm)	1½" x 10" (4 cm x 25 cm)
Lift Cylinder	2" x 1½" x 10" (5 cm x 3 cm x 25 cm)	2" x 1½" x 10" (5 cm x 3 cm x 25 cm)
Attachment System	SmartHitch® 2	SmartHitch® 2
Plow Weight**	868 lb ⁸ (394 kg) / 878 lb ⁸ (398 kg) / 920 lb ⁸ (417 kg)	925 lb ⁸ (420 kg) / 935 lb ⁸ (424 kg) / 977 lb ⁸ (443 kg)
Plow Lights	SL3 LED with Ice Shield Technology™	SL3 LED with Ice Shield Technology™
D-Force®	Optional	Optional

*Maximum product width. **Plow weight does not include vehicle mount weight. ⁸Vehicle mount weight range: 130-160 lb (59-73 kg).
***The tripping base angles on the DXT come standard with curb guards and patented snow catcher, and they can be used as the cutting edge until worn.

SUPER-DUTY STRAIGHT-BLADE

TRACTOR APPLICATION: JOHN DEERE® 4 AND 5 SERIES AND KUBOTA® GRAND L40 TRACTOR MODELS

Specifications	7'6" Super-Duty Steel	8' Super-Duty Steel	8'6" Super-Duty Steel	9' Super-Duty Steel
Blade Width (Straight)	90" (229 cm)	96" (244 cm)	102" (259 cm)	108" (274 cm)
Plowing Width @ 30° Angle	78" (198 cm)	83" (211 cm)	88" (224 cm)	93½" (238 cm)
Blade Height	29" (74 cm)	29" (74 cm)	29" (74 cm)	29" (74 cm)
Blade Thickness	11-ga steel	11-ga steel	11-ga steel	11-ga steel
Cutting Edge	½" x 6" (1.3 cm x 15 cm)	½" x 6" (1.3 cm x 15 cm)	½" x 6" (1.3 cm x 15 cm)	½" x 6" (1.3 cm x 15 cm)
Reinforcement Ribs	7 vertical, 2 diagonal	7 vertical, 2 diagonal	7 vertical, 2 diagonal	7 vertical, 2 diagonal
Plow Shoes	Cast iron	Cast iron	Cast iron	Cast iron
Trip Springs	4	4	4	4
Angle Cylinders	1½" x 10" (4 cm x 25 cm)	1½" x 10" (4 cm x 25 cm)	2" x 10" (5 cm x 25 cm)	2" x 10" (5 cm x 25 cm)
Lift Cylinder	2" x 1½" x 10" (5 cm x 3 cm x 25 cm)	2" x 1½" x 10" (5 cm x 3 cm x 25 cm)	2¼" x 1½" x 12" (5.8 cm x 3 cm x 30.5 cm)	2¼" x 1½" x 12" (5.8 cm x 3 cm x 30.5 cm)
Shock Absorber	1	1	1	1
Attachment System	SmartHitch® 2	SmartHitch® 2	SmartHitch® 2	SmartHitch® 2
Plow Weight*	680 lb ⁴ (308 kg)	698 lb ⁴ (317 kg)	720 lb ⁴ (327 kg)	742 lb ⁴ (337 kg)
Plow Lights	SL3 LED with Ice Shield Technology™	SL3 LED with Ice Shield Technology™	SL3 LED with Ice Shield Technology™	SL3 LED with Ice Shield Technology™
D-Force®	Optional	Optional	Optional	Optional

*Plow weight does not include vehicle mount weight. ⁴Vehicle mount weight range: 75-105 lb (34-48 kg).

EXT

TRACTOR APPLICATION: JOHN DEERE® 4 AND 5 SERIES AND KUBOTA® GRAND L40 TRACTOR MODELS



Specifications	8' Retracted / 10' Expanded Steel	Specifications	8' Retracted / 10' Expanded Steel
Blade Width (Retracted)	96" (244 cm)	Trip Springs	4
Blade Width (Extended)	120" (305 cm)	Angle Cylinders	1½" x 10" (4 cm x 25 cm)
Plowing Width @ 30° Angle	83" (211 cm) / 103" (262 cm)	Wing Cylinders	1½" x 1½" x 12¾" (4 cm x 3 cm x 32 cm)
Blade Height	30" (76.2 cm)	Lift Cylinder	2" x 1½" x 10" (5 cm x 3 cm x 25 cm)
Blade Thickness	11-ga steel	Shock Absorber	1
Cutting Edge (AR450)	½" x 6" (1.3 cm x 15 cm)	Attachment System	SmartHitch® 2
Reinforcement Ribs	9 vertical	Plow Weight*	970 lb ⁴ (440 kg)
Plow Shoes	Optional	Plow Lights	SL3 LED with Ice Shield Technology™

*Plow weight does not include vehicle mount weight. ⁴Vehicle mount weight range: 75-105 lb (34-48 kg).

TRACTOR PLOWS

XT

TRACTOR APPLICATION: JOHN DEERE® 4 AND 5 SERIES AND KUBOTA® GRAND L40 TRACTOR MODELS



Specifications	7'6" XT Steel	8'2" XT Steel / Poly / Stainless	9'2" XT Steel / Poly / Stainless
Blade Width (Straight) Curb Guard Width*	90" (229 cm) 93.75" (238.1 cm)	98" (249 cm) 101.75" (258.5 cm)	110" (279 cm) 113.75" (288.9cm)
Plowing Width (V Position) Curb Guard Width*	81" (206 cm) 82.5" (209.6 cm)	88" (224 cm) 89.5" (227.3 cm)	99" (252 cm) 99.9" (253.8 cm)
Plowing Width (Scoop) Curb Guard Width*	74" (188 cm) 86.1" (218.7 cm)	81" (206 cm) 93" (236.2 cm)	92" (234 cm) 103.4" (262.6 cm)
Plowing Width @ 30° Angle	77" (196 cm)	85" (216 cm)	95" (241 cm)
Blade Height	30" (76 cm) at center; 36" (91 cm) at ends	30" (76 cm) at center; 37½" (95 cm) at ends	30" (76 cm) at center; 37½" (95 cm) at ends
Blade Thickness	14-ga steel	11-ga steel / ¾" (0.95 cm) poly / 14-ga stainless steel	11-ga steel / ¾" (0.95 cm) poly / 14-ga stainless steel
Cutting Edge (AR450)	½" x 6" (1.3 cm x 15 cm)	½" x 6" (1.3 cm x 15 cm)	½" x 6" (1.3 cm x 15 cm)
Reinforcement Ribs	6 vertical, 2 diagonal	6 vertical, 2 diagonal	8 vertical, 2 diagonal
Plow Shoes	Optional	Optional	Optional
Trip Springs	4	4	4
SmartLock® Cylinders	1½" x 10" (4 cm x 25 cm)	1½" x 10" (4 cm x 25 cm)	2" x 10" (5 cm x 25 cm)
Lift Cylinder	2" x 1½" x 10" (5 cm x 3 cm x 25 cm)	2" x 1½" x 10" (5 cm x 3 cm x 25 cm)	2" x 1½" x 12" (5 cm x 3 cm x 30.5 cm)
Attachment System	SmartHitch® 2	SmartHitch® 2	SmartHitch® 2
Plow Weight**	713 lb ⁴ (323 kg)	785 lb ⁴ (356 kg) / 795 lb ⁴ (361 kg) / 823 lb ⁴ (374 kg)	842 lb ⁴ (382 kg) / 852 lb ⁴ (387 kg) / 882 lb ⁴ (400 kg)
Plow Lights	SL3 LED with Ice Shield Technology™	SL3 LED with Ice Shield Technology™	SL3 LED with Ice Shield Technology™

*Maximum product width. **Plow weight does not include vehicle mount weight. ⁴Vehicle mount weight range: 75-105 lb (34-48 kg).

HTX V-BLADES AND STRAIGHT-BLADES

TRACTOR APPLICATION: JOHN DEERE® 3 AND 4 SERIES TRACTOR MODELS



Specifications	7'6" HTX V-Plow Steel	7' HTX Straight Steel / Poly / Stainless	7'6" HTX Straight Steel / Poly / Stainless
Blade Width (Straight) Curb Guard Width*	90" (229 cm) 94.2" (239.2 cm)	84" (213 cm) N/A	90" (229 cm) N/A
Plowing Width (V Position) Curb Guard Width*	81" (206 cm) 82.75" (210.2 cm)	N/A	N/A
Plowing Width (Scoop) Curb Guard Width*	74" (188 cm) 86.75" (220.4 cm)	N/A	N/A
Plowing Width @ 30° Angle	78" (198 cm)	73" (185 cm)	78" (198 cm)
Blade Height	32" (81 cm) at end; 25" (64 cm) at center	26" (66 cm)	26" (66 cm)
Blade Thickness	14-ga steel	14-ga (0.19 cm) steel / ¼" (0.6 cm) poly / 14-ga (0.19 cm) stainless steel	14-ga (0.19 cm) steel / ¼" (0.6 cm) poly / 14-ga (0.19 cm) stainless steel
Cutting Edge	¾" x 6" (0.95 cm x 15 cm)	¾" x 6" (0.95 cm x 15 cm)	¾" x 6" (0.95 cm x 15 cm)
Reinforcement Ribs	6 vertical, 2 diagonal	4 vertical, 2 diagonal	6 vertical, 2 diagonal
Plow Shoes	Optional	Optional	Optional
Trip Springs	2	2	2
SmartLock® Cylinders	1¼" x 8¼" (3 cm x 21 cm)	N/A	N/A
Angle Cylinders	N/A	1½" x 6½" (4 cm x 17 cm)	1½" x 6½" (4 cm x 17 cm)
Lift Cylinder	1¾" x 1½" x 10" (5 cm x 3 cm x 25 cm)	1¾" x 1½" x 10" (5 cm x 3 cm x 25 cm)	1¾" x 1½" x 10" (5 cm x 3 cm x 25 cm)
Attachment System	SmartHitch® 2	SmartHitch® 2	SmartHitch® 2
Plow Weight**	490 lb ^c (222 kg)	393 lb ^c (178 kg) / 367 lb ^c (167 kg) / 393 lb ^c (178 kg)	440 lb ^c (200 kg) / 416 lb ^c (189 kg) / 440 lb ^c (200 kg)
Plow Lights	SL3 LED with Ice Shield Technology™	SL3 LED with Ice Shield Technology™	SL3 LED with Ice Shield Technology™
D-Force®	N/A	Optional	Optional

*Maximum product width. **Plow weight does not include vehicle mount weight. ^cVehicle mount weight range: 45-75 lb (20-34 kg).

STANDARD-DUTY STRAIGHT-BLADE

TRACTOR APPLICATION: JOHN DEERE® 4 AND 5 SERIES AND KUBOTA® GRAND L40 TRACTOR MODELS



Specifications	7'6" Standard-Duty Steel	Specifications	7'6" Standard-Duty Steel
Blade Width (Straight)	90" (229 cm)	Angle Cylinders	1½" x 10" (4 cm x 25 cm)
Plowing Width @ 30° Angle	78" (198 cm)	Lift Cylinder	2" x 1½" x 10" (5 cm x 3 cm x 25 cm)
Blade Height	27½" (70 cm)	Shock Absorber	1
Blade Thickness	14-ga steel	Attachment System	SmartHitch® 2
Cutting Edge	¾" x 6" (0.95 cm x 15 cm)	Plow Weight*	597 lb ⁴ (271 kg)
Reinforcement Ribs	7 vertical	Plow Lights	SL3 LED with Ice Shield Technology™
Plow Shoes	Cast iron	D-Force®	Optional
Trip Springs	3		

*Plow weight does not include vehicle mount weight. ⁴Vehicle mount weight range: 75-105 lb (34-48 kg).



BOSSPLOW.COM

See how BOSS continues to BACK YOU UP.
Get more info, watch videos, find a dealer or chat live.

Call 800-286-4155

Email sales@bossplow.com



Ask your dealer or visit bossplow.com to explore the complete lineup of BOSS products, including Truck Equipment, Compact Vehicle Equipment, Heavy Equipment, Ice Control Equipment, Snowrator® and Accessories. **Ask your local dealer about financing options!**



With quality and reliability at the forefront, BOSS Genuine Parts are designed, built and tested to fit your BOSS product.



Exclusive to BOSS Owners, joining this community gives you a profile page, a free gift and access to special offers and information on BOSS products and services.



SnowCare for Troops is a nationwide outreach program that performs free snow removal for active military families.

OMNIA

PARTNERS



BOSS PRODUCTS
2010 THE BOSS WAY
P.O. BOX 787
IRON MOUNTAIN, MI 49801-0787

BOSS SNOWPLOW PRODUCTS
ARE DESIGNED AND MANUFACTURED IN
AN APPROVED ISO 9001:2015
REGISTERED FACILITY.

Patents: www.ttopats.com
©2019 BOSS PRODUCTS. ALL RIGHTS RESERVED.
PRINTED IN U.S.A. FORM #SLS-HET02019

John Deere is a registered trademark of Deere & Company. Kubota is a registered trademark of Kubota Corporation. The "f" logo is a registered trademark/service mark of Facebook, Inc. The Twitter logo is a registered trademark/service mark of Twitter, Inc. The YouTube logo is a trademark/service mark of Google LLC. The "in" logo is a registered service mark of LinkedIn Corporation. The Instagram logo is a registered service mark of Instagram, LLC. The Blogger logo is a registered service mark of Google LLC. The Omnia Partners logo is a service mark of Omnia Partners, Inc. The Sourcewell logo is a service mark of National Joint Powers Alliance. The Advantage International Registrar logo is a trademark of Advantage International Registrar, Inc. All other trademarks belong to BOSS Snowplow.

